

Thermador 
Product Step Charts



PROFESSIONAL RANGES
BUILT IN OVENS
COOKTOPS
VENTILATION
REFRIGERATION
UNDER COUNTER
DISHWASHERS

Professional Ranges

Pro[®] Harmony



- ① 24" Depth – Flush Mount
- ② Glass behind Stainless
- ③ Toekick

- 2 ExtraLow[®] Burners
- Griddle or Grill Options
- Blue Indicator Lights

Pro[®] Grand



- ① 27" Depth – Commercial
- ① LED Bullnose Lighting
- ② Glass on top of Stainless
- ③ Chronometer
- ④ Chamfered feet

- + 4 ExtraLow[®] Burners
- + 1 XHI 22,000 BTU Burner
- + Induction Option
- + Blue Pinhole Indicator Lights
- + SoftClose[®] Door
- + TFT Control Panel
- + Home Connect[™]

All Professional Ranges Feature:

- Pedestal Star[®] Burners
- QuickClean Base[®]
- Halogen Oven Lighting
- Large Oven Window
- Heavy Duty Metal Knobs
- Star-K Certified
- Single Fan Convection Technology

Pro Harmony® Ranges

30" Models



- 1 Telescopic Oven Rack
- 2 Standard Oven Racks
- 4 Cooking Modes (*gas models*) + Extended Bake

Surface Configurations

- 4 Star® Burners
- 5 Star® Burners

36" Models



- + 3 Telescopic Oven Racks
- + TFT Control Panel
- + Home Connect™
- + Standard Temperature Probe
- 4 Cooking Modes (*gas models*) + Sabbath

Surface Configurations

- + 6 Star® Burners
- + 4 Star® Burners + Griddle
- + 4 Star® Burners + Indoor Grill

48" Models



- + Secondary Oven (*Thermal Only*)

Surface Configurations

- + 6 Star® Burners + Griddle
- + 6 Star® Burners + Indoor Grill
- + 4 Star® Burners + Indoor Grill + Griddle (*Dual Fuel Only*)

Dual Fuel Upgrades: *Self Cleaning Oven* ♦ *True Convection* ♦ *7 Cooking Modes*

Pro Grand® Ranges

36" Models



- 3 Telescopic Oven Racks
- Multi Point Temperature Probe
- 4 Cooking Modes (*gas models*) + Sabbath
- Self Cleaning Oven

Surface Configurations

- 6 Star® Burners
- 4 Star® Burners + Griddle
- 4 Star® Burners + Indoor Grill
- 4 Star® Burners + Induction Module (*Dual Fuel Only*)

48" Models



- + Secondary Oven (*Convection*)
or
- + Steam & Convection Secondary Oven with Warming Drawer (*Dual Fuel Only*)

Surface Configurations

- + 6 Star® Burners + Griddle
- + 6 Star® Burners + Indoor Grill
- + 6 Star® Burners + Induction Module (*Dual Fuel Only*)
- + 4 Star® Burners + Indoor Grill + Griddle (*Dual Fuel Only*)

60" Models



Only Available in Dual Fuel

- + 2 Full Size Ovens
or
- Steam & Convection Secondary Oven with Warming Drawer

Surface Configurations

- + 6 Star® Burners + Double Griddle
- + 6 Star® Burners + Indoor Grill + Griddle

Dual Fuel Upgrades: True Convection ♦ 7 Cooking Modes ♦ Steam & Convection Option ♦ Induction Option

Microwave Ovens

MicroDrawer®

MED24WS—24"

MED30WS—30"



- 1.2 cu ft capacity
- 950 Watts
- 10 Power levels
- Sensor cooking
- Flush installation

Microwave

MB30WS— Masterpiece®

MB30WP— Professional



- + 1.6 cu ft capacity
- Drop down door (no trim kits!)
- + LED lighting
- 30" width
- + 10 automatic cooking modes

Speed Oven

MC30WS— Masterpiece®

MC30WP— Professional



- 1.6 cu ft capacity
- + 1000 W microwave element
- + Convection & Broil elements
- + 36 Cook Smart™ auto programs
- + 3 custom combi modes
- + 240V

Single Wall Ovens

ME301YP

Select Ovens

ME301WS
PO301W

Deluxe Ovens

MED301_WS (3 door options)
POD301_W (3 door options)



- 4.6 cu ft Capacity
- 11 Cooking Modes
- True Convection
- Sabbath Mode
- Fast Preheat
- 2 or 4 Hour Self Clean
- Touch Controls
- SoftClose® hinge
- Telescopic Rack (1)
- Home Connect™ enabled



- 4.5 cu ft Capacity
- + 13 Cooking Modes
- + Standard Meat Probe
- + Color TFT User Interface
- + Deluxe Racking System
- + Home Connect™ with OTA Software Updates
- + Perfect collection design match



- + 16 Cooking Modes
- + Max Broil
- + Rotisserie
- + Multi-point Meat Probe
- + Telescopic Racks (3)
- + Side opening door option in both design collections
(left and right hinge specific)



Double Wall Ovens

ME302YP



- 4.6 cu ft Capacity (each oven)
- 11 Cooking Modes (Upper)
- True Convection (Upper)
- 5 Cooking Modes (Lower)
- Sabbath Mode
- Fast Preheat
- 2 or 4 Hour Self Clean
- Touch Controls
- SoftClose® hinge
- Telescopic Rack (1 Upper)
- Home Connect™ enabled

Select Ovens

ME302WS
PO302W



- 4.5 cu ft Capacity (each oven)
- + 13 Cooking Modes
- + True Convection (both ovens)
- + Standard Meat Probe (Upper)
- + Color TFT User Interface
- + Deluxe Racking System
- + Telescopic Racks (1 Upper + 1 Lower)
- + Home Connect™ with OTA Software Updates
- + Perfect collection design match

Deluxe Ovens

MED302_WS (3 door options)
POD302_W (3 door options)



- + 16 Cooking Modes (Upper)
- 13 Cooking Modes (Lower)
- + Max Broil (Upper)
- + Rotisserie (Upper)
- + Multi-point Meat Probe (Upper)
- + Telescopic Racks (3 Upper + 1 Lower)
- + Side opening door option in both design collections (left and right hinge specific)

Combination Wall Ovens

Microwave & Select Oven

MEM301WS
POM301W

Speed & Deluxe Oven

MEDMC301WS
PODMC301W

Steam Convection & Deluxe Oven

MEDS302WS
PODS302W



– Microwave (Upper)

Select Wall Oven (Lower)

- 13 Cooking Modes
- 1 Telescopic Rack
- Home Connect™



- + Speed Oven (Upper)
- + 36 CookSmart™ auto programs
- + Convection & Broil elements

Deluxe Wall Oven (Lower)

- + 16 Cooking Modes
- + Rotisserie & Max Broil
- + 3 Telescopic Racks
- Home Connect™



- + Steam & Convection Oven (Upper)
- + Steam, Bake, & Broil modes
- + 41 Auto Programs
- + Home Connect™



Deluxe Wall Oven (Lower)

- + 16 Cooking Modes
- + Rotisserie & Max Broil
- + 3 Telescopic Racks
- Home Connect™



Drawers

SD30WC
SDS30WC

WD30WC

WD30W



SD30WC



SDS30WC



- Storage only
- SD30WC = 2.4 cu ft
- SDS30WC = 0.8 cu ft
- Push to open
- Flush installation

**SDS30WC with a Steam & Convection Oven allows it to match the cutout of a 30" Single Wall Oven*

- + Warming Drawer
- 2.2 cu ft
- + Low, Medium, High, Proof
- + Timer with Auto Shut Off
- + 450 Watts

- + Custom Panel Ready
- 2.2 cu ft
- Low, Medium, High, Proof
- + SoftClose®
- Timer with Auto Shut Off
- 450 Watts

In A Class of Their Own

Microwave Hood
MU30WSU



Steam & Convection Oven
MEDS301WS
PODS301W



Triple Stack
MEDMCW31WS
PODMCW31W



- 2.1 cu ft Capacity
- 1,100 Watts of power
- Sensor Cooking
- Triple Distribution Turntable Disk
- 5-Speed, 385 CFM ventilation
- Vented or recirculating

**For use with 5 burner Pro Harmony Ranges PRD305WHU / PRG305WH only*

- 2.8 cu ft Capacity
- Steam, Bake, & Broil models
- 17 Heating Modes
- 41 Auto Programs
- Steam Assist
- 3 Full Extension Racks
- Multi-point Meat Probe
- Home Connect™



- Speed Oven (*Upper*)
- 36 CookSmart™ auto programs
- Convection & Broil elements

Deluxe Wall Oven (*Middle*)

- 16 Cooking Modes
- Rotisserie & Max Broil
- 3 Telescopic Racks
- Home Connect™
- Warming Drawer (*Lower*)



Gas Cooktops

SGS305TS—30"
SGS365TS—36"

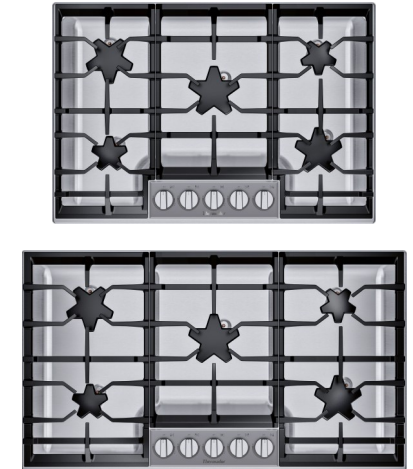
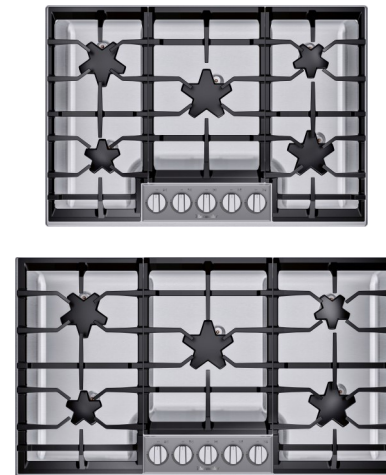
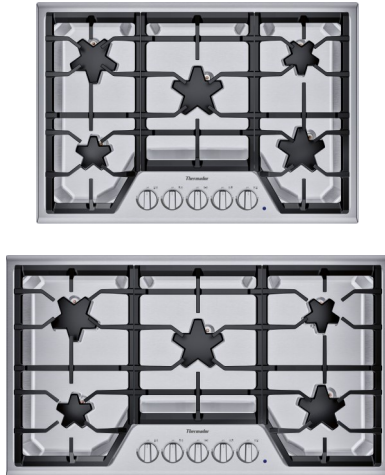
SGSX305TS—30"
SGSX365TS—36"

SGSP305TS—30"
SGSP365TS—36"

SGSXP305TS—30"
SGSXP365TS—36"

Star® Burner Series

Pedestal Star® Burner Series



- Solid, formed steel maintop
- Chiseled edges
- Trapezoid control panel
- One burner indicator light
- 16K BTU center burner
- Electronic re-ignition

- + 2 ExtraLow® Select burners
- + Knob haptics and visual separations for ExtraLow®

- + Raised pedestal burners
- + QuickClean Base® with teardrop emboss
- + Rectangular, glass control panel
- + Five burner indicator lights (around knobs)
- + 18K BTU center burner

- + 2 ExtraLow® Select burners
- + Knob haptics and visual separations for ExtraLow®
- + White & Blue LED Knob lighting

Electric Cooktops

Knob Control

CEM305TB—30"

CEM366TB—36"

Touch Control

CET305TB—30"

CET366TB—36"



- Stainless Steel Metal Knobs
- 9 Power Levels
- Triple Zone, 11" Element @ 3,000 Watts
- Dual Zone, Bridge Element

- 30" Frameless
- 36" Framed

- + Touch Control Panel
- + 17 Power Levels
- + Timers for all elements
- + CookSmart® frying sensor
- + PowerBoost® on 36"

- 30" Frameless
- 36" Framed

Induction Cooktops

Heritage Induction

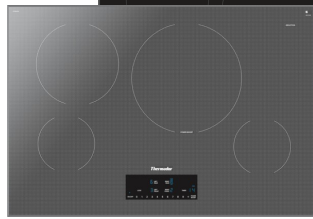
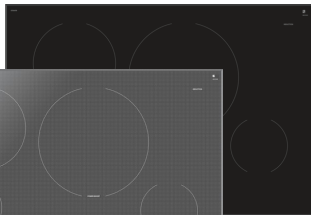
CIT304TB — 30" Black
 CIT304TM — 30" Silver Mirror
 CIT365TB — 36" Black

Liberty® Induction

CIT367XGS* / CIT367XG — Titanium Gray
 CIT367XMS* / CIT367XM — Silver Mirror
 *S on end denotes Framed model

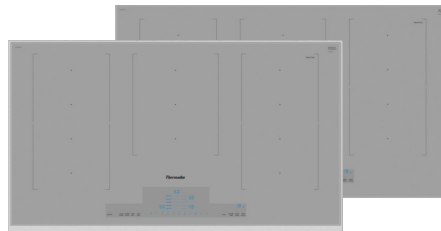
Freedom® Induction

CIT30XWBB — 30" Dark Gray
 CIT36XWB — 36" Dark Gray (Framed)
 CIT36XWBB — 36" Dark Gray



- Legacy round element design
- Auto shut-off timers for all elements
- 17 power levels
- PowerBoost®
- 13" Triple Element (36")

Frameless Design



- + Three Extra Large Cooking Zones
- + HeatShift®
- + MoveMode®
- + PanBoost®
- + CookSmart® frying sensor
- + Stopwatch Timer
- + WiFi Connectivity with HomeConnect™

Framed or Frameless Designs



- + Largest fully usable cooking surface
- + Full color touch screen
- + Heat 6 pots (36") or 5 pots (30") anywhere on cooktop surface
- + SapphireGlow®, MyZone®, TeppanyakiPro®
- + Cooking Sensor Ready
- WiFi Connectivity with HomeConnect™
- + 30 Amp breaker

Framed or Frameless Design (36" only)

Masterpiece[®] Lineup

LOW-PROFILE WALL



- 30" / 36" / 48"
- HMWB3_WS—600 cfm
- HMWB_ _1WS—1000 cfm
- Noise Control Technology™
- Home Connect™
- Dishwasher safe hybrid mesh filters
- Recirculation kit available (600 cfm only)

UNDER CABINET DRAWER



- 30" / 36"
- HMDW3_WS—600 cfm
- Noise Control Technology™
- Home Connect™
- Dishwasher safe hybrid mesh filters
- Recirculation kit available
- Pull out drawer with locking mechanism

CHIMNEY WALL



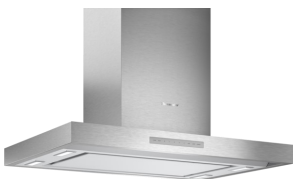
- 30" / 36"
- HMCB3_WS—600 cfm
- Noise Control Technology™
- Home Connect™
- Dishwasher safe hybrid mesh filters
- Recirculation kit available

CHIMNEY DRAWER



- 30" / 36"
- HDDB3_WS—600 cfm
- Noise Control Deluxe™
- Home Connect™
- Dishwasher safe hybrid mesh filters
- Recirculation kit available
- Pull out drawer with locking mechanism

BOX ISLAND HOOD



- 36" / 42"
- HMIB_ _WS—600 cfm
- Noise Control Deluxe™
- Home Connect™
- Efficient perimeter filter (dishwasher safe)
- Recirculation kit available

CUSTOM INSERT



- 30" / 36" / 48"
- VCI2_ _DS
- Optional blower choices
- 3 speed settings
- Dishwasher safe mesh filters

DOWNDRAFT



- 30" / 36"
- UCVM3_XS
- UCVP36XS—LED lights
- Flexible blower discharge options
- Dishwasher safe hybrid mesh filters
- Recirculation kit available

Professional Lineup

PRO HARMONY WALL



- 30" / 36" / 48"
- PH_ _HWS
- 18" height / 24" depth
- Integral, Inline, & Remote blowers available
- Dishwasher safe baffle filters

PRO GRAND WALL



- 36" / 42" / 48" / 54" / 60"
- PH_ _GWS
- 18" height / 27" depth
- Integral, Inline, & Remote blowers available
- Dishwasher safe baffle filters
- Infrared heat lamps
- Home Connect™

PRO CHIMNEY WALL



- 36" / 48"
- HPCN_ _WS
- 24" depth
- Integral, Inline, & Remote blowers available
- Dishwasher safe baffle filters

PRO BOX ISLAND



- 42" / 54"
- HPIN_ _WS
- Angled box design to provide headroom
- Integral, Inline, & Remote blowers available
- Dishwasher safe baffle filters
- Home Connect™

PRO CUSTOM INSERT



- 36" / 42" / 48" / 54" / 60"
- VCIN_ _GWS
- Integral, Inline, & Remote blowers available
- Dishwasher safe baffle filters
- Home Connect™

Freedom[®] Columns

Fresh Food

T_IR905P
23.5" / 24" / 30" / 36"

Freezer

T_IF905P
18" / 24" / 30" / 36"

External Dispenser Freezer

T18IF905_P — 18" unit
T24IF905_P — 24" unit

All shown with optional SS panel and handle accessories (sold separately)



- Gallon Bin (1) on Door
- SoftClose[®] Drawers
- Free Flow[®] Cold Air System
- ThermaFresh[®] System
- SuperCool Function
- Carbon Air Filter
- Field Reversible Door Swing



- On Door Shelving
- Full Extension Drawers
- Height-adjustable Shelves
- Filtered Diamond Ice
- SuperFreeze[®] Function
- Field Reversible Door Swing
- Side-by-side Seal Kit Included



- Capacitive Touch Dispense Control
- Full Extension Drawers
- Height-adjustable Shelves
- Filtered Diamond Ice
- SuperFreeze[®] Function
- Left or Right *HINGE SPECIFIC*
- Side-by-side Seal Kit Included

~ All Columns ~

- Stainless Steel Interior
- Open Door Assist
- TFT Display

- Home Connect[™]
- LED Theater Lighting
- Energy Star[®] Certified

- Custom Panel
- Fully Flush Install
- All-leg Leveling

Bottom Mount Refrigeration

30" Single Door

T30IB905SP — Custom Panel
T30BB9_5SS — Stainless Steel*

36" Single Door

T36IB905SP — Custom Panel
T36BB9_5SS — Stainless Steel*

36" French Door

T36IT905NP — Custom Panel
T36BT9_5NS — Stainless Steel*

*Stainless Steel Models are Pre-Assembled with SS panels & handles, and include the FRAMEKIT10
915 = Masterpiece® Handle / 925 = Professional Handle



- 16 cubic ft capacity
 - 11.5 cu ft refrigerator
 - 4.5 cu ft freezer
- Gallon Bin (1) on Door
- Field Reversible Door Swing



- 19.6 cubic ft capacity
 - 14 cu ft refrigerator
 - 5.6 cu ft freezer
- Gallon Bin (1) on Door
- Field Reversible Door Swing



- 19.4 cubic ft capacity
 - 13.9 cu ft refrigerator
 - 5.5 cu ft freezer
- Gallon Bin (1) on Each Door

~ All BM Refrigeration ~

- Stainless Steel Interior
- Open Door Assist
- TFT Display
- LED Theater Lighting
- Dual Compressors & Dual Evaporators
- Carbon Air Filter
- SoftClose® Drawers
- Full Width Chiller Drawer
- SuperCool
- SuperFreeze®
- Filtered Diamond Ice
- Home Connect™
- Energy Star® Certified
- Fully Flush Install
- All-leg Leveling

Wine Columns

18" Column

T18IW905SP

24" Column

T24IW905SP

Optional Accessories

Available for Fresh Food, Freezer,
Bottom Mount & Wine units

All shown with optional SS panel and handle accessories
(sold separately)



- 2 Zone Temperature Management
- 58 Bottle Capacity

- + 3 Zone Temperature Management
- + 92 Bottle Capacity

~ All Wine Units ~

- Open Door Assist
- Home Connect™
- Humidity Control
- Sealed Motor
- Double-pane, UV Resistant, Tempered Glass Door
- Full Extension Racks
- Wenge Wood Diamond Dowels
- Portable Wine Presenter
- Field Reversible Hinge
- Fully Flush Install
- Custom Panel

Stainless Steel Door Panels

- available with pre-drilled holes for handle accessory
- available without holes for handleless installation

Handles

- Masterpiece® & Professional styles
- "Classic" Masterpiece® & Professional styles to match pre-2018 styling
- 30" or 36" lengths (refer to Design Guide for which to use when)

FRAMEKIT10

- Frames the column to hide unfinished furniture returns
- Frames the unit when it cannot be installed flush (i.e. 24" cabinet depth)

HEATRKIT20

- Use when any 2 units are installed side-by-side where one is not a freezer
- Use when ANY 2 units are less than 6" apart but not joined together
- Recommended when units are installed on an exterior wall or in high humidity areas

Under Counter Refrigeration

Wine Reserve
T24UW9_0__

Glass Door Refrigerator
T24UR9_0__

Refrigerator Drawers
T24UR9_OD_

Combination Drawers
T24UC9_OD_



- 41 Bottle Capacity
- UV Resistant Tempered Glass Door
- 6 Full Extension Rails
- Wenge Triangular Dowels
- Dual Zone
 - 40°F - 52°F Upper
 - 52°F - 64°F Lower
- Left or Right Hinge Specific

- 5.1 cu ft Capacity
- 4 Tempered Glass Shelves
- Temperature Range of 33°F - 64°F
- Preset Cooling Modes
- Quick Chill
- Left or Right Hinge Specific
- Energy Star® Qualified

- 5 cu ft Capacity
- Customizable Drawers
- Removable Rubber Mats
- Temperature Range of 33°F - 64°F
- Preset Cooling Modes
- Quick Chill
- Energy Star® Qualified

- 4.7 cu ft Capacity
- Filtered Ice Maker
- Customizable Drawers
- Removable Rubber Mats
- Temperature Range
 - 33°F - 58°F Fridge
 - -5°F - 32°F Freezer
- Quick Chill (Fridge & Freezer)
- Energy Star® Qualified

~ All Under Counter Units ~

- LED Lighting
- SoftClose® Doors / Drawers
- Touch Electronic Controls
- Open Door / Drawer Alarm
- Ability to Flush Install
- Star-K Certified
- Available in Masterpiece®, Professional, & Custom Panel Models

Dishwashers

Emerald®
DWHD650W __

Topaz®
DWHD660W __

Sapphire®
DWHD770W __

Star Sapphire®
DWHD870W __

All Dishwasher models offered in 3 designs: Masterpiece®, Professional, or Custom Panel



- 6 Cycles | 5 Options
- 48 dBA
- Blue Powerbeam®
- Standard 3rd Rack
- Adjustable Upper Rack
- Extra-Tall-Item™ Sprinkler
- Sense-A-Wash® Soil Sensing
- Extra Dry Option
- Home Connect™



- + 6 Cycles | 6 Options
- + 44 dBA
- + Time Remaining Powerbeam®
- + Flexible Folding Tines
- + Water Softener



- + 7 Cycles | 7 Options
- + 42 dBA
- + Adjustable 3rd Rack
- + Premium Controls
- + Push to Open Door
- + Sapphire Glow® (Interior Light)
- + StarDry™ with Zeolite™



- + 8 Cycles | 7 Options
- 44 dBA
- + Entertainer's 3rd Rack
- + Star Glow (Interior Light)
- + Star Speed® Cycle
- + 18 Wine Glass Capacity

Refer to Picture Price Books for current portfolio assortment through 2021.

Dishwashers

Glass Care Center®

DWHD771WFM – *Masterpiece®*

DWHD771WFP – *Professional*

DWHD771WPR – *Panel Ready*



- 7 Cycles | 7 Options
- 44 dBA
- Time Remaining Powerbeam®
- Star Speed® Cycle
- 26 Wine Glass Capacity
- Water Softener
- Adjustable Upper Rack
- Flexible Folding Tines
- Accommodates Large Pots & Pans
- Extra-Tall-Item™ Sprinkler
- Soil Sensing Cycles
- Sapphire Glow® (Interior Light)

Refer to Picture Price Books for current portfolio assortment through 2021.